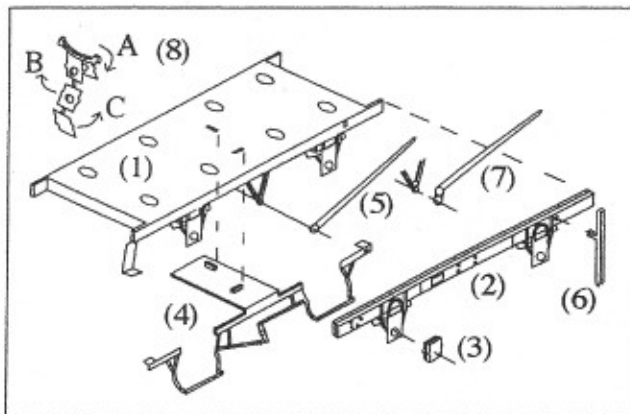


FENCE HOUSES MODEL FOUNDRY

REF 2-325 - NER P7 CHASSIS 10'-6" WHEELBASE 2mm FINESCALE STANDARDS (12.25mm Axle Length).



Check all hole clearances for "top hat" bearings and brake rigging. (use 0.3mm wire for the rigging).

Remove parts from the fret and clean off tabs, BUT do NOT remove the half etched ends from the brake retainers (6). Cut these parts out as close to the fret as possible. Also do NOT remove the hinge tabs holding solebars and blanks together. Bend chassis (1) to shape as shown, (fold lines on inside, so writing will be underneath), and fit top hat bearings.

4) Bend brake unit (4) to shape and around wheels, (4 x 90 degree bends per wheel) and push the two small tabs upwards so these locate into the chassis from underneath, (this ensures brakes are correct way round).

5) Fit 2mm Scale Association wheelsets on 12.25mm axles into the bearings and locate brake unit to check wheel/brakeshoe alignment. At this point you also need to thread one of your 0.3 wires through the vee hangers (lowest hole on cam side) and brake rods. Leave plenty of spare each side for attaching brake levers later on. When all are lined up, solder brakes (4) to chassis (1) and 0.3 wire to brake unit and vee hangers. Check wheels are still running free, then remove whilst the next soldering job is carried out.

If using the "old" brown bodies, you need to cut off the plastic solebars on the body, and fit replacement solebars (2). These should be tinned, and folded together. After soldering, cut off the two hinge tabs. Tin the back of the blank side and solder to the chassis (1) keeping the top and springs flush with the chassis. Fold up the small axlebox (3) and solder to the chassis over the top hat end.

Fold up brake lever retaining strap (6) as shown and locate through solebars and chassis. Bend straight brake lever (5) to shape over axle box and fit handle end of lever into strap and other end with hole over rigging wire. Solder retaining strap from back of solebar, and lever with small amount of solder to wire. Repeat for cam lever (7), using a short piece of wire to locate the second hole.

If using the later grey wagons, (shop item 2-531) you leave the body solebars on, and ignore the metal ones. Use the alternative springs/axlebox (8). Bend to shape as shown and solder to chassis in line with springs thereon. In this case you need to drill the plastic solebar to take the brake retaining straps.

Bob Jones.

33 Ellesmere, Bournmoor, Fence Houses, Houghton-le-Spring, Tyne & Wear. DH4 6EA

Telephone - 0191 3853554 - e-mail - rvjones@33ellesmere.freemove.co.uk