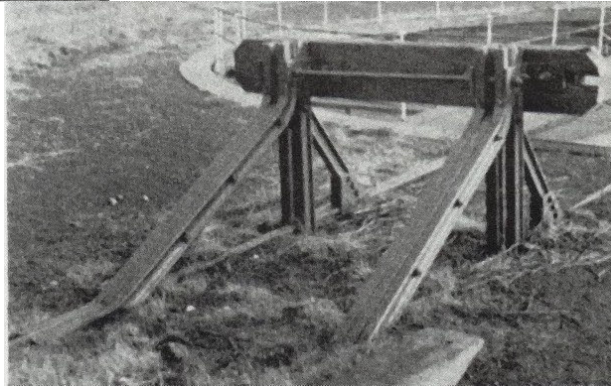
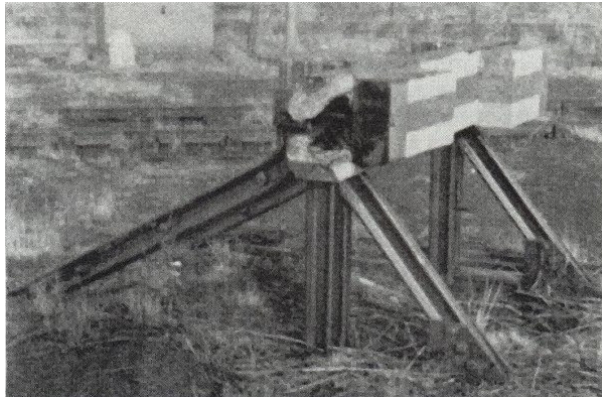


The 2mm Scale Association 1-074 SR rail-built buffer stop



Assembly instructions

1. Cut out the wooden bufferbeam parts (4a) from the centre of the etch. Do **not** at this stage, separate the two mirror image halves of the etch, or cut out any of the other parts.
2. Fold the etch in half along its centre line. As this is a 180 degree fold the tabs are on the inside of the fold. Then solder the various parts together back to back (parts 1, 2, and 3). You may wish to tin the rear of the parts before folding.
3. Cut out the etch from its surround. Now perform folds 2 and 3 as shown on the diagram - top section behind the centre, and lower in front - and solder together the outer, centre and inner supports, and mounting plates where they meet.
4. Fold back the bracket plates on the outer supports (parts 1) through 180 degrees and solder in place on the support. Then fold the protruding part of the plate back through 90 degrees. File off the remaining tags.
5. The two combined supports can now be cut from the etch. There are a number of tags to be removed, from the various layers, and you may also find it easier to cut away parts of the surround using snips.
6. Assemble the two combined supports onto the track
7. Attach either a rail-built or wooden bufferbeam to the supports. The eight layers of part 4 are laminated together to form a representation of a wooden bufferbam, however you may prefer to use a plasticard replacement using part 4 as a template. A piece of metal or plastic rod can be used to represent the tiebar behind the bufferbeam.
8. Unless you used a plasticard bufferbeam, remember you have now electrically connected the two rails together, so the bufferstop needs to be on a short isolated section of track at the end of a siding.

References

1. Railway Modeller April 1972