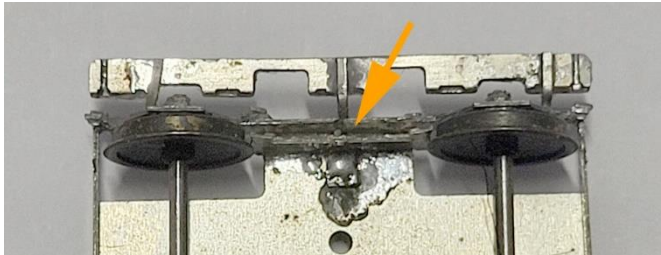


VOLUTE SPRINGS FOR DEAN BOGIES

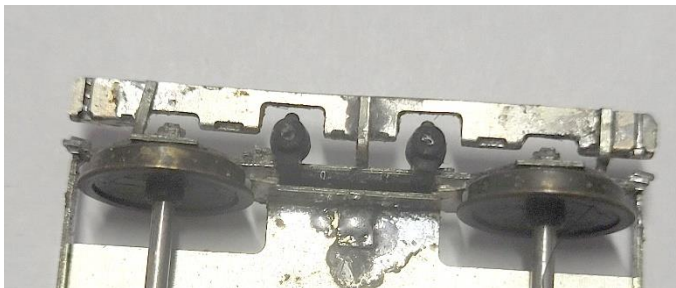
These 3D prints are designed to represent the volute springs that feature prominently on Dean coach bogies. There is an 8'6 version and one for 10' bogies. The bogies can be fitted with step-boards on not.

Build the etched bogie as per the instructions. Take care that no solder gets into the gap between the insides of the frames and the bracket on which the centre brakes are mounted:



Remove a pair of springs from the sprue. Cutting the supports with sharp snips or a scalpel is probably the best approach. Each sprue has four pairs of springs, enough for one coach (two bogies). The 10' version has double springs. This is an 8'6 example:

Be careful at this point not to damage the spring hangers which are connected to the springs by a very slender rod.



Take the springs in a pair of fine tweezers and guide the main bracket into the aforementioned gap. Again, take care that the spring hangers don't catch on the outside edge of the bogie frame. Ensure that the springs are square and central.

Run a small amount of thin superglue into the area where the main bracket sits to secure it to the bogie. You should also apply a very small amount between the bogie frame and the spring hanger brackets to secure these. Let the glue run in by capillary action, applying very small amounts at a time.

Repeat until all four spring sets are affixed to your pair of bogies.

©2023 The 2mm Scale Association

